

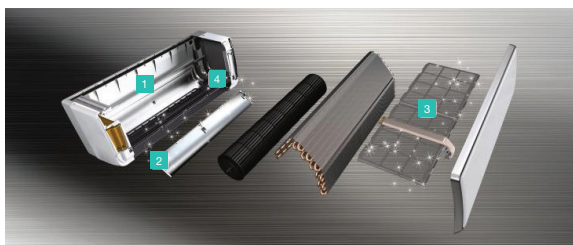
S-SERIES WALL MOUNTED RAK-PSB

The S-Series provides the highest energy savings and unmatched IAQ with stainless clean and ion mist air filtration, which is effective in capturing particles as small as 0.001 microns in size.



FEATURES AND BENEFITS

- New elegant and compact design
- DC Hybrid inverter with Scroll compressors
- Superior indoor air quality (IAQ)
- Advanced and extensive air purification
- High seasonal efficiency A+++ class in cooling and A++ in heating, fully ErP compliant
- Energy saving sensors adjust heating and cooling levels as room occupancy changes
- Quiet operation for enhanced user comfort (22dBA)
- Stainless clean and ionised mist function to eliminate odours and destroy 99% of airborne viruses and bacteria.



1 STAINLESS AIR DUCT

Stainless material is used for the air duct located at the back of the fan. This has disinfection and antifouling effects, and keeps the interior of the air conditioner clean.

3 MICRO MESH STAINLESS FILTER

Contamination-resistant micro mesh stainless filter. Even greasy contaminants can be removed with a quick wipe. As it is stainless, it has a disinfection effect. With auto filter cleaning.

REMOTE CONTROLLERS



Standard
Wireless Remote Controller



SPX-RCDB (optional)
Wired Remote Controller



SPX-WKT2 (optional)
Wired 7-day Remote Controller

- ECO operation energy saving function
- Leave Home Function – set temperature at 10°C automatically when no one is at home for up to 99 days
- Weekly Timer – 6 patterns
- Temperature and monthly power consumption display
- Copy function to copy settings from one day to another
- Summer/Winter modes
- Error Code Display
- Alarm History

- Daily Timer
- Weekly timer
- Sleep timer
- Leave Home Function
- Error Code Display
- Alarm History
- Control remotely via smartphone Hi-Kumo app

2 STAINLESS LOUVER

Stainless material is used for the horizontal louver. This has disinfection and antifouling effects, and keeps the air outlet clean.

4 STAINLESS PLASMA AIR PURIFICATION

Negative ions are emitted from the plasma electrode. The negative ions surround contaminants and effectively carry them to the micro mesh stainless filter, where they are captured.



RAK-PSB



RAK-WSB

S-SERIES

WALL MOUNTED RAK-PSB

Indoor Unit Model		RAK-18PSB	RAK-25PSB	RAK-35PSB
Nominal Cooling Capacity (min - max)	kW	1.8 (0.5-2.8)	2.5 (0.5-3.4)	3.5 (0.5-4.1)
Sensible Cooling Capacity	kW	1.8	2.2	2.7
UK Cooling Capacity (sensible)	kW	1.9 (1.7)	2.7 (2.4)	4.3 (2.8)
Heating capacity at -7°C	kW	2.3	3.2	4.0
Nominal Heating Capacity (min - max)	kW	2.3 (0.6-4.8)	3.2 (0.6-5.8)	4.0 (0.6-6.6)
Nominal cooling power input (min - max)	kW	0.300 (0.070-0.880)	0.470 (0.070-0.960)	0.805 (0.070-1.350)
Nominal heating power input (min - max)	kW	0.375 (0.065-1.620)	0.57 (0.06 - 1.41)	0.79 (0.06-1.49)
Seasonal Efficiency SEER ⁽⁴⁾		7.41	8.50	8.50
Energy Efficiency Class	kWh/yr	A++	A+++	A+++
Annual Energy Consumption		85	103	144
Seasonal Efficiency SCOP ⁽⁴⁾ (Average Climate)		4.60	4.68	4.72
Energy Efficiency Class	kWh/yr	A++	A++	A++
Annual Energy Consumption		588	802	896
Nominal Load Efficiency EER / COP ⁽⁵⁾		6.00/6.13	5.32/5.61	4.35/5.06
Energy Class (Cool/Heat)		A/A	A/A	A/A
Noise level cooling (sound pressure) (SL / L / M / H) ⁽²⁾	dB(A)	22/28/34/40	22/28/34/42	23/28/34/44
Noise level heating (sound pressure) (SL / L / M / H) ⁽²⁾	dB(A)	22/30/34/41	22/30/34/42	23/30/34/44
Noise level (sound power) ⁽¹⁾	dB(A)	54	56	58
Air flow cooling mode (SL / L / M / H)	m³/h	260/300/420/470	260/320/420/510	270/320/420/520
Air flow heating mode (SL / L / M / H)	m³/h	260/300/420/540	260/370/520/600	270/410/520/610
Dehumidification	l/h	1.2	1.4	1.6
Dimensions (H x W x D)	mm	295x798x258	295x798x258	295x798x258
Weight	kg	12.0	12.0	12.0
Power supply		From Outdoor Unit		
Drain diameter (ext)		ø16mm	ø16mm	ø16mm
Remote Control	Std	Infra Red (RAR-5W1)	Infra Red (RAR-5W1)	Infra Red (RAR-5W1)
	Opt. 1	Wired (SPX-RCDB)	Wired (SPX-RCDB)	Wired (SPX-RCDB)
	Opt. 2	Wired (SPX-WKT2)	Wired (SPX-WKT2)	Wired (SPX-WKT2)

Outdoor Unit Model		RAC-18WSB	RAC-25WSB	RAC-35WSB
Noise level cooling (sound pressure) ⁽³⁾	dB(A)	46	48	49
Noise level heating (sound pressure) ⁽³⁾	dB(A)	46	48	49
Noise level (sound power) ⁽¹⁾	dB(A)	60	62	63
Air flow (Cooling / Heating)	m³/h	1860/1620	1860/1620	1920/1620
Dimensions (H x W x D)	mm	600x792x299	600x792x299	600x792x299
Weight	kg	40	40	40
Piping diameter (Liquid / Gas)	Inch	1/4 - 1/2	1/4 - 1/2	1/4 - 1/2
	mm	6.35 - 12.70	6.35 - 12.70	6.35 - 12.70
Minimum Piping Length	m	3	3	3
Maximum Piping Length / Height Difference	m	20/10	20/10	20/10
Current Quantity of Refrigerant	kg	1.35	1.35	1.35
Chargeless / Additional Refrigerant Charge	m / g/m	20/-	20/-	20/-
Power supply		230V / 1Ph / 50Hz	230V / 1Ph / 50Hz	230V / 1Ph / 50Hz
Recommended fuse size	A	16	16	16
Starting current (cooling/heating)	A	<1 Amp	<1 Amp	<1 Amp
Running current (cooling/heating)	A	0.30-3.83/0.28-7.04	0.30-4.17/0.28-9.78	0.30-5.87/0.28-10.65
Interconnecting Cables	No.	3 + E	3 + E	3 + E
Working Range (cooling/heating)	°C	-10°C~+43°C / -20°C~+21°C	-10°C~+43°C / -20°C~+21°C	-10°C~+43°C / -20°C~+21°C
Refrigerant / GWP		R410A / 1975	R410A / 1975	R410A / 1975
Compressor type		Scroll	Scroll	Scroll

(1) Sound power level is the A-weighted sound power level [dB(A)] measured at standard rated conditions for the "cooling" mode operation in accordance to EN12102

(2) Sound pressure level is measured at 0.8 meter beneath indoor unit 1m from discharge grille in anechoic chamber.

(3) Sound pressure level is measured at 1.0m from front face of unit, 1.5m above the ground in anechoic chamber.

(4) Data calculated in accordance to prEN14825 and the Commission Communication 2012/C 172/01

(5) Nominal load efficiency (Cooling 35°C/27°C, Heating 7°C/20°C)



For ErP performance
data visit us at:
hitachiaircon.com/erpactive

UNITED KINGDOM
aircon.uk@jci-hitachi.com
tel: 01628 585 394

IRELAND
aircon.ireland@jci-hitachi.com
tel: 00 353 1 216 4406