

Air Conditioning

Product Information

**PLA-ZM R410A Power Inverter
Heat Pump (Three Phase)**
4-Way Blow Ceiling Cassette System

Making a
World of
Difference

Mr.SUM.



The **PLA-ZM Power Inverter** range is a ceiling cassette system that blends a host of outstanding features with a sophisticated streamlined design. Offering high seasonal efficiency, advanced control options and quiet operation, this range provides extreme flexibility and ease of installation.

Key Features

- Improved airflow control, including horizontal airflow for greater comfort
- Optional 3D i-see sensor grille (PLP-6EAE) provides customised comfort by automatically monitoring room occupancy, position and body temperatures
- Optional filter lowering operation down to 4m (PLP-6EAJ)
- Replace Technology available



Cooling | Heating | Ventilation | Controls



Air Conditioning

Product Information

PLA-ZM R410A Power Inverter Heat Pump (Three Phase) 4-Way Blow Ceiling Cassette System

Making a
World of
Difference



PLA-ZM - INDOOR UNITS		PLA-ZM100EA	PLA-ZM125EA	PLA-ZM140EA
CAPACITY (kW)	Heating (nominal)	11.2 (4.5-14.0)	14.0 (5.0-16.0)	16.0 (5.7-18.0)
	Cooling (nominal)	9.5 (4.9-11.4)	12.5 (5.5-14.0)	13.4 (6.2-15.0)
	Heating (UK)	9.5 (3.85-11.9)	11.9 (4.25-13.6)	13.6 (4.85-15.3)
	Cooling (UK)	9.2 (4.5-10.5)	11.5 (5.05-12.9)	12.9 (5.7-14.1)
SHF (nominal)		0.75	0.67	0.67
COP / EER (nominal)		4.30 / 4.30	3.81 / 3.25	3.07 / 3.07
SCOP / SEER (BS EN14825)		4.90 / 7.20	4.70 / 6.70	4.50 / 6.50
ErP ENERGY EFFICIENCY CLASS Heating/Cooling		A++ / A++	N/A	N/A
AIRFLOW (l/s) Lo-Mi-Mi2-Hi		317-367-417-467	350-400-433-483	400-433-483-533
PIPE SIZE mm (in) Gas/Liquid		15.88 (5/8") / 9.52 (3/8")	15.88 (5/8") / 9.52 (3/8")	15.88 (5/8") / 9.52 (3/8")
SOUND PRESSURE LEVEL (dBA) Lo-Mi-Mi2-Hi		31-34-37-40	33-36-39-41	36-39-42-44
SOUND POWER LEVEL (dBA)		61	62	65
DIMENSIONS (mm) Width x Depth x Height (Grille)		840 (950) x 840 (950) x 298 (40)	840 (950) x 840 (950) x 298 (40)	840 (950) x 840 (950) x 298 (40)
WEIGHT (kg) Unit / Panel		26 / 5	26 / 5	26 / 5
ELECTRICAL SUPPLY		Fed by Outdoor Unit	Fed by Outdoor Unit	Fed by Outdoor Unit
FUSE RATING (BS88) - HRC (A)		6	6	6
INTERCONNECTING CABLE No. Cores		4	4	4
GRILLE REFERENCE		PLP-6EA	PLP-6EA	PLP-6EA
WIRED REMOTE CONTROLLER REFERENCE		PAR-33MAA	PAR-33MAA	PAR-33MAA
WIRELESS REMOTE CONTROLLER REFERENCE		PAR-SL100A-E	PAR-SL100A-E	PAR-SL100A-E

PUHZ-ZRP - OUTDOOR UNITS		PUHZ-ZRP100YKA3 ⁽³⁾	PUHZ-ZRP125YKA3 ⁽³⁾	PUHZ-ZRP140YKA3 ⁽³⁾
SOUND PRESSURE LEVEL (dBA)	Heating/Cooling	51 / 49	52 / 50	52 / 50
	Cooling	69	70	70
WEIGHT (kg)		123	125	131
DIMENSIONS (mm) Width x Depth x Height		1050 x 330 + 40 x 1338	1050 x 330 + 40 x 1338	1050 x 330 + 40 x 1338
ELECTRICAL SUPPLY		380-415V, 50Hz	380-415V, 50Hz	380-415V, 50Hz
PHASE		Three	Three	Three
SYSTEM POWER	Heating/Cooling (nominal)	2.60 / 2.20	3.67 / 3.84	4.84 / 4.56
	Heating/Cooling (UK)	2.09 / 1.87	3.27 / 3.26	4.30 / 3.87
STARTING CURRENT (A)		4.0	4.0	4.0
SYSTEM RUNNING CURRENT (A) Heating/Cooling [MAX]		3.42 / 3.42 (8.0)	5.92 / 5.96 (9.5)	7.52 / 6.76 (13.0)
FUSE RATING (BS88) - HRC (A)		16	16	16
MAINS CABLE No. Cores		5	5	5
MAX PIPE LENGTH (m)		75	75	75
MAX HEIGHT DIFFERENCE (m)		30	30	30
CHARGE REFRIGERANT (kg) / CO ₂ EQUIVALENT (t)		5.00 / 10.44	5.00 / 10.44	5.00 / 10.44
MAX ADDITIONAL REFRIGERANT (kg) / CO ₂ EQUIVALENT (t)		2.40 / 5.01	2.40 / 5.01	2.40 / 5.01

⁽³⁾ Three Phase

PRODUCT DIMENSIONS

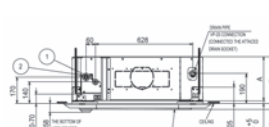
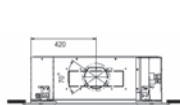
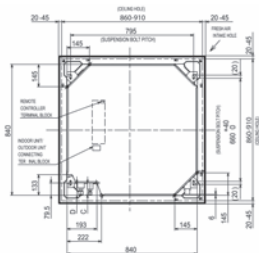
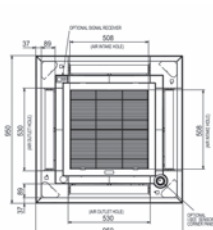
PLA-ZM100/125/140EA

Lower View

Upper View

Front View

Side View



PLA-ZM-EA*380V/50Hz/110V/120V/140V					
ZM	①	②	A	B	C
35/50	REFRIGERANT PIPE Ø 1/2" FLARED CONNECTION 1/4"	REFRIGERANT PIPE Ø 1/2" FLARED CONNECTION 1/4"	281	258	79.5
60	REFRIGERANT PIPE Ø 1/2" FLARED CONNECTION 1/4"	REFRIGERANT PIPE Ø 1/2" FLARED CONNECTION 1/4"	281	258	79.5
71	REFRIGERANT PIPE Ø 1/2" FLARED CONNECTION 1/4"	REFRIGERANT PIPE Ø 1/2" FLARED CONNECTION 1/4"	281	258	79.5
100-140	REFRIGERANT PIPE Ø 1/2" FLARED CONNECTION 1/4"	REFRIGERANT PIPE Ø 1/2" FLARED CONNECTION 1/4"	281	258	79.5



Telephone: 01707 282880

email: air.conditioning@meuk.mee.com

web: airconditioning.mitsubishielectric.co.uk

UNITED KINGDOM Mitsubishi Electric Europe Living Environment Systems Division

Travellers Lane, Hatfield, Hertfordshire, AL10 8XB, England General Enquiries Telephone: 01707 282880 Fax: 01707 278881

IRELAND Mitsubishi Electric Europe Westgate Business Park, Ballymount, Dublin 24, Ireland

Telephone: Dublin (01) 419 8800 Fax: Dublin (01) 419 8890 International code: (003531)

Country of origin: United Kingdom - Japan - Thailand - Malaysia. ©Mitsubishi Electric Europe 2017. Mitsubishi and Mitsubishi Electric are trademarks of Mitsubishi Electric Europe B.V. The company reserves the right to make any variation in technical specification to the equipment described, or to withdraw or replace products without prior notification or public announcement. Mitsubishi Electric is constantly developing and improving its products. All descriptions, illustrations, drawings and specifications in this publication present only general particulars and shall not form part of any contract. All goods are supplied subject to the Company's General Conditions of Sale, a copy of which is available on request. Third-party product and brand names may be trademarks or registered trademarks of their respective owners.

Note: The fuse rating is for guidance only. Please refer to the relevant databook for detailed specification. It is the responsibility of a qualified electrician/electrical engineer to select the correct cable size and fuse rating based on current regulation and site specific conditions. Mitsubishi Electric's air conditioning equipment and heat pump systems contain a fluorinated greenhouse gas, R410A (GWP:2088), R32 (GWP:675), R407C (GWP:1774) or R134a (GWP:1430). *These GWP values are based on Regulation (EU) No 517/2014 from IPCC 4th edition. In case of Regulation (EU) No.626/2011 from IPCC 3rd edition, these are as follows: R410A (GWP:1975), R32 (GWP: 550), R407C (GWP:1650) or R134a (GWP:1300).



www.greengateway.mitsubishielectric.co.uk

Mitsubishi Electric UK's commitment to the environment

Follow us @meuk_Jes
Follow us @green_gateway

Mitsubishi Electric
Living Environment Systems UK

[mitsubishielectric2](https://www.youtube.com/mitsubishielectric2)

thehub.mitsubishielectric.co.uk

Effective as of September 2017