

# HITACHI

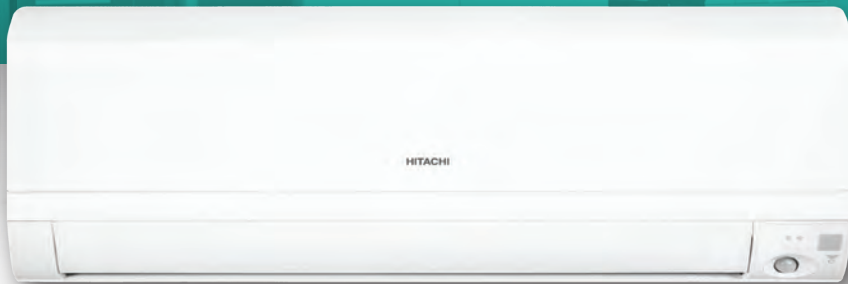
LIGHT COMMERCIAL R32 SINGLE SPLITS

ROOM AIR CONDITIONERS

## LIGHT COMMERCIAL R32 SINGLE SPLITS

FROM 5 TO 7KW

FOR RESIDENTIAL & LIGHT COMMERCIAL APPLICATIONS  
SUSTAINABLE REFRIGERANT (R32)  
HIGH SEASONAL PERFORMANCES  
EXCLUSIVE FEATURES



WALL

DUCTED

CASSETTE



# WALL

## MAIN FEATURES

- **Wide range** -> 5.0, 6.0 and 7.0kW
- **High seasonal efficiency**
  - SEER: A++
  - SCOP: A++
- **High heating capacity at low temperature**
- **Human sensor** (standard)
- **Compact dimensions** (width 900 mm)
- **4 WAY SWING:** Horizontal and vertical auto-swing
- **Long piping length** = up to **30m**
- **Wide working range**
  - Cooling: -15°C / +46°C
  - Heating: -15°C / +24°C

## ZOOM ON THE HUMAN SENSOR

- Eco sensor (standard): the unit adapts its temperature settings depending on whether people are detected in the room -> Energy savings.
- When people are not detected for 20 minutes, the set temperature is automatically shifted for energy saving. If no-one is in the room for 60 minutes, the set temperature is shifted further.

## CONTROLS

### WIRELESS REMOTE CONTROL



- Ref: SPX-RCKA2
- Weekly timer
- Info display: room temperature, power consumption, alarm code

### WIRED REMOTE CONTROL



- Ref: SPX-WKT3
- Weekly Timer
- Info display: room temperature, power consumption, alarm code
- Temperature sensor embedded

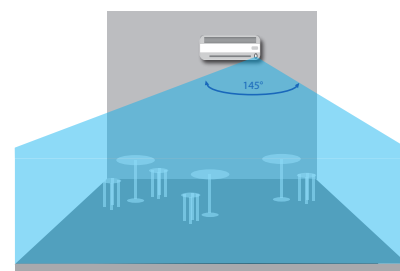
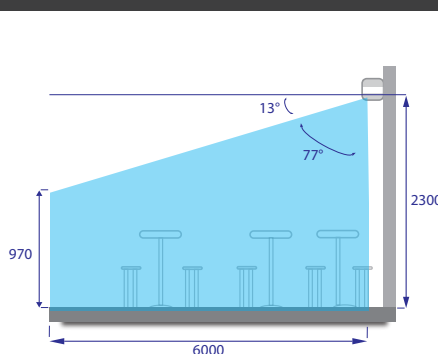


- Ref: SPX-RCDB
- Simple Timer

### WIFI SOLUTION



- Ref: SPX-WFG01 (Wifi gateway)
- Weekly Timer
- Info display: room temperature, alarm code
- Out of home control





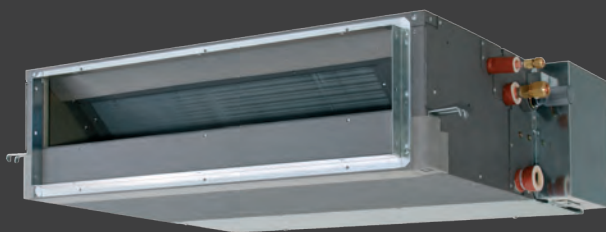
**Aesthetic and efficient solution for public spaces such as bars and shops.**



**Ideal solution for server rooms  
-> cooling up to -15°C.**

INDOOR UNIT	UNIT	RAK-50PPD	RAK-60PPD	RAK-70PPD
Nominal Cooling capacity (min - max)	kW	5.00 (1.20 - 5.80)	6.00 (1.20 - 6.50)	7.00 (1.50 - 8.00)
Nominal Heating capacity (min - max)	kW	6.00 (1.20 - 6.80)	7.00 (1.20 - 8.00)	8.00 (1.50 - 8.50)
Heating capacity at -7°C	kW	4.20	4.80	5.80
Noise level cooling (sound pressure) (SL / L / M / H)	dB(A)	26 / 33 / 39 / 47	30 / 33 / 42 / 48	30 / 35 / 42 / 47
Noise level (sound power)	dB(A)	60		
Air flow cooling mode (SL / L / M / H)	m³/h	310 / 410 / 570 / 720		510 / 630 / 870 / 1020
Dehumidification	l/h	2.8		4.8
Dimensions (H x W x D)	mm	300 x 900 x 230		300 x 1100 x 260
Weight	kg	11.5		15
Condensate drain	mm	φ16mm		
Power supply	V	220 - 240V / 1Ph / 50/60Hz		
Cable section	mm²	1.50x 3+EARTH		
Piping diameter (Liq / Gas)	Inch	1/4" / 1/2"		1/4" / 5/8"
Remote control (options)		SPX-RCKA2 / SPX-RCDB / SPX-WKT3		

OUTDOOR UNIT	UNIT	RAC-50NPD	RAC-60NPD	RAC-70NPD
Nominal cooling power input (min - max)	kW	1.420 (0.300 ~ 2.500)	1.710 (0.300 ~ 2.650)	2.000 (0.500 ~ 2.700)
Nominal heating power input (min - max)	kW	1.500 (0.300 ~ 2.650)	1.840 (0.300 ~ 2.650)	2.100 (0.500 ~ 2.800)
EER / COP		3.52 / 4.00	3.51 / 3.80	3.50 / 3.81
SEER / SCOP		7.30 / 4.60	6.50 / 4.20	7.00 / 4.60
Energy class (SEER/SCOP)		A++ / A++	A++ / A+	A++ / A++
Noise level cooling (sound pressure)	dB(A)	50		52
Noise level (sound power)	dB(A)	65		67
Air flow (Cooling / Heating)	m³/h	2160 / 2160		2700 / 2700
Dimensions (H x W x D)	mm	750 x 850 x 298		800 x 850 x 298
Weight	kg	50		52
Power supply	V/Ph/Hz	220 - 240V / 1Ph / 50/60Hz		
Recommended fuse size	A	20		
Starting current	A	10		
Cable section (power)	mm²	2.50x 2+EARTH		
Interconnection between indoor unit and outdoor unit	mm²	1.50x 3+EARTH		
Piping diameter (Liq / Gas)	Inch	1/4" / 1/2"		1/4" / 5/8"
Minimum piping length	m	3		
Maximum piping length / height difference	m	30 / 20		
Current quantity of refrigerant	kg / TeqCO²	1.50 / 1.01		1.60 / 1.08
Chargeless length / Additional refrigerant charge	m / g/m	30 / -		
Working range (cooling / heating)	°C	-15°C - 46°C // -15°C - 24°C		
Refrigerant / GWP		R32 / 675		
Compressor		ROTARY		



# DUCTED

## MAIN FEATURES

- **Wide range** -> 5.0, 6.0 and 7.0kW
- **High seasonal efficiency**
  - SEER: A++
  - SCOP: A+
- **High heating capacity at low temperature**
- **High static pressure** = 150 Pa
- **Drain pump included**
- **Long piping length** = up to 30m
- **Wide working range**
  - Cooling: -15°C / +46°C
  - Heating: -15°C / +24°C

## ZOOM ON THE ZONING SOLUTION

- Flexibility and individual zone control of each interior space to maintain consistent temperatures and airflow distribution.
- Each zone can be individually controlled for optimum energy savings.
- 150 Pa -> Fully adapted to all installation specifications (duct length, zone number etc.)



## CONTROLS

### WIRELESS REMOTE CONTROL



- Ref: SPX-RCKA1
- Weekly timer
- Info display: room temperature, power consumption, alarm code

### WIRED REMOTE CONTROL



- Ref: SPX-WKT3
- Weekly Timer
- Info display: room temperature, power consumption, alarm code
- Temperature sensor embedded



- Ref: SPX-RCDA
- Simple Timer

### WIFI SOLUTION



- Ref: SPX-WFG01 (Wifi gateway)
- Weekly Timer
- Info display: room temperature, alarm code
- Out of home control







Very low sound levels are achieved with ducted unit false ceiling installations.

Invisible solution for perfect integration.

INDOOR	UNIT	RAD-50PPD	RAD-60PPD	RAD-70PPD
Nominal Cooling capacity (min - max)	kW	5.00 (1.20 - 5.80)	6.00 (1.20 - 6.50)	7.0 (1.50 - 8.00)
Nominal Heating capacity (min - max)	kW	6.00 (1.20 - 6.80)	7.00 (1.20 - 8.00)	8.0 (1.50 - 8.50)
Heating capacity at -7C	kW	4.20	5.00	5.50
Noise level cooling (sound pressure) (SL / L / M / H)	dB(A)	29 / 32 / 35 / 39		
Noise level (sound power)	dB(A)	53		
Air flow cooling mode (SL / L / M / H)	m³/h	350 / 540 / 800 / 1140		
Dehumidification	l/h	2.8		4.8
Included drain pump	yes/no	yes		
Max. height available for drain pump	cm	50		
Drain pump pressure lift	cm	30		
Static pressure (L / M / H)	Pa	50 / 100 / 150		
Dimensions (H x W x D)	mm	270 x 900 x 720		
Weight	kg	35		
Power supply	V	220 - 240V / 1Ph / 50/60Hz		
Cable section	mm²	1.50x 3+EARTH		
Piping diameter (Liq / Gas)	Inch	1/4" / 1/2"		1/4" / 5/8"
Remote control (options)		SPX-RCKA1 / SPX-RCDA / SPX-WKT3		

OUTDOOR	UNIT	RAC-50NPD	RAC-60NPD	RAC-70NPD
Nominal cooling power input (min - max)	kW	1.420 (0.300 ~ 2.500)	1.710 (0.300 ~ 2.600)	2.110 (0.500 ~ 2.700)
Nominal heating power input (min - max)	kW	1.570 (0.300 ~ 2.650)	1.840 (0.300 ~ 2.650)	2.200 (0.500 ~ 2.800)
EER / COP		3.52 / 3.82	3.51 / 3.80	3.32 / 3.64
SEER / SCOP		6.20 / 4.00		6.10 / 4.00
Energy class (SEER/SCOP)		A++ / A+		
Noise level cooling (sound pressure)	dB(A)	50		
Noise level (sound power)	dB(A)	65		
Air flow (Cooling / Heating)	m³/h	2160 / 2160		2700 / 2700
Dimensions (H x W x D)	mm	750 × 850 × 298		800 × 850 × 298
Weight	kg	50		52
Power supply	V/Ph/Hz	220 - 240V / 1Ph / 50/60Hz		
Recommended fuse size	A	20		
Starting current	A	10		
Cable section (power)	mm²	2.50x 2+EARTH		
Interconnection between indoor unit and outdoor unit	mm²	1.50x 3+EARTH		
Piping diameter (Liq / Gas)	Inch	1/4" / 1/2"		1/4" / 5/8"
Minimum piping length	m	3		
Maximum piping length / height difference	m	30 / 20		
Current quantity of refrigerant	kg / TeqCO²	1.50 / 1.01		1.60 / 1.08
Chargeless length / Additional refrigerant charge	m / g/m	30 / -		
Working range (cooling / heating)	°C	-15°C - 46°C // -15°C - 24°C		
Refrigerant / GWP		R32 / 675		
Compressor	Type	ROTARY		



# CASSETTE

## MAIN FEATURES

- **Wide range** -> 5.0 and 6.0kW
- **High seasonal efficiency**
  - SEER: A++
  - SCOP: A+
- **High heating capacity at low temperature**
- **Human sensor** (optional)
- **Coanda effect** extend conditioned airflow across the room.
- **Drain pump included**
- **Long piping length** = up to 30m
- **Wide working range**
  - Cooling: -15°C / +46°C
  - Heating: -15°C / +24°C

## ZOOM ON THE HUMAN SENSOR

- Ref: SOR-NEC  
Eco sensor (optional): the unit adapts its temperature settings depending on whether people are detected in the room -> Energy savings

## CONTROLS

### WIRELESS REMOTE CONTROL



- Ref: SPX-RCKA3
- Weekly timer
- Info display: room temperature, power consumption, alarm code

### WIRED REMOTE CONTROL



- Ref: SPX-WKT3
- Weekly Timer
- Info display: room temperature, power consumption, alarm code
- Temperature sensor embedded



- Ref: SPX-RCDB
- Simple Timer

### WIFI SOLUTION



- Ref: SPX-WFG01 (Wifi gateway)
- Weekly Timer
- Info display: room temperature, alarm code
- Out of home control

## ZOOM ON THE INDIVIDUAL LOUVRE CONTROL

- Each louvre of the cassette can be individually controlled for a comfortable air flow and adaptability to all room configurations.



## ZOOM ON THE COMPACT DIMENSIONS

- The most compact cassette on the market at 600x600mm. The new panel is fully embedded within one ceiling tile. Lights or other installations can be installed in the adjoining ceiling tiles.





Ideal for light commercial applications such as offices, restaurants and shops.

INDOOR UNIT	UNIT	RAI-50PPD	RAI-60PPD
Nominal Cooling capacity (min - max)	kW	5.00 (1.20 - 5.80)	6.00 (1.20 - 6.50)
Nominal Heating capacity (min - max)	kW	6.00 (1.20 - 6.80)	7.00 (1.20 - 8.00)
Heating capacity at -7C	kW	4.20	4.80
Noise level cooling (sound pressure) (SL / L / M / H)	dB(A)	29 / 35 / 39 / 43	
Noise level (sound power)	dB(A)	56	
Air flow cooling mode (SL / L / M / H)	m³/h	390 / 540 / 630 / 720	
Dehumidification	l/h	2.8	3.8
Included drain pump	yes/no	yes	
Max. height available for drain pump	cm	30.4	
Drain pump pressure lift	cm	11.5	
Dimensions (H x W x D)	mm	285 x 570 x 570	
Weight	kg	17	
Panel weight	kg	2.8	
Panel dimensions (H x W x D)	mm	30 x 620 x 620	
Panel reference		P-AP56NAMS1	
Power supply	V	220 - 240V / 1Ph / 50/60Hz	
Cable section	mm²	1.50x 3+EARTH/-	
Piping diameter (Liq / Gas)	Inch	1/4" / 1/2"	
Remote control (options)		SPX-RCKA3 / SPX-RCDB / SPX-WKT3	

OUTDOOR UNIT	UNIT	RAC-50NPD	RAC-60NPD
Nominal cooling power input (min - max)	kW	1.420 (0.300 ~ 2.500)	1.710 (0.300 ~ 2.600)
Nominal heating power input (min - max)	kW	1.570 (0.300 ~ 2.650)	1.840 (0.300 ~ 2.650)
EER / COP		3.52 / 3.82	3.51 / 3.80
SEER / SCOP		6.20 / 4.40	
Energy class (SEER/SCOP)		A++ / A+	
Noise level cooling (sound pressure)	dB(A)	50	
Noise level (sound power)	dB(A)	65	
Air flow (Cooling / Heating)	m³/h	2160 / 2160	
Dimensions (H x W x D)	mm	750 x 850 x 298	
Weight	kg	50	
Power supply	V/Ph/Hz	220 - 240V / 1Ph / 50/60Hz	
Recommended fuse size	A	20	
Starting current	A	10	
Cable section (power)	mm²	2.50x 2+EARTH	
Interconnection between indoor unit and outdoor unit	mm²	1.50x 3+EARTH	
Piping diameter (Liq / Gas)	Inch	1/4" / 1/2"	
Minimum piping length	m	3	
Maximum piping length / height difference	m	30 / 20	
Current quantity of refrigerant	kg / TeqCO²	1.50 / 1.01	
Chargeless length / Additional refrigerant charge	m / g/m	30 / -	
Working range (cooling / heating)	°C	-15°C - 46°C	
	°C	-15°C - 24°C	
Refrigerant / GWP		R32 / 675	
Compressor	Type	Rotary	

# HITACHI

Specifications in this catalogue are subject to change to allow Hitachi Air Conditioning Solutions to continue to bring the latest innovations to its customers.

**Johnson Controls - Hitachi Air Conditioning Europe SAS (UK)**  
Whitebrook Park, Lower Cookham Road, Maidenhead,  
Berkshire SL6 8YA, United Kingdom  
email: [aircon.uk@jci-hitachi.com](mailto:aircon.uk@jci-hitachi.com)

**Johnson Controls - Hitachi Air Conditioning Europe SAS. (Ireland)**  
Unit 9, Bluebell Business Park, Old Naas Road, Dublin 12, Ireland  
email: [aircon.ireland@jci-hitachi.com](mailto:aircon.ireland@jci-hitachi.com)

tel: 020 3901 0912  
[www.hitachi-hvac.com](http://www.hitachi-hvac.com)  
[www.hitachiaircon.com](http://www.hitachiaircon.com)

JC-H GB 0001-18

## YOUR INSTALLER, AN EXPERT, A PROFESSIONAL

Your installer will be able to select products suited to your needs, carry out a state-of-the-art installation and provide after-sales care through an on-going maintenance contract.

Your HITACHI distributor:

### **HAWCO LTD**

Lower South Street, Godalming, Surrey, GU7 1BZ

**T: 01483 869070 | F: 01483 869 001**

**E: [sales@hawco.co.uk](mailto:sales@hawco.co.uk)**

**[www.hawco.co.uk](http://www.hawco.co.uk)**

**The commercial guarantees** provided by Hitachi relate solely to the parts within our units. They shall apply only to parts which have been installed in accordance with our technical specifications and continue where the unit(s) are subjected to regular maintenance by qualified personnel. The frequency of maintenance required is dependent upon the conditions of use and the legislation in force. For more information please contact your installer.