



FDT100VG

Micro Inverter Cassette

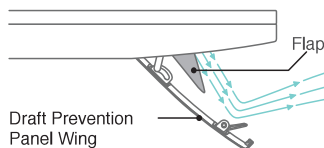


Individual flap control system

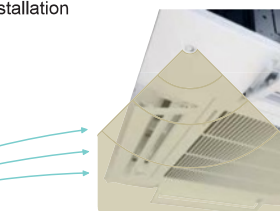


According to room temperature conditions, four directions of air flow can be controlled by individual flap as preferred. Individual flap control is available even after installation

Draft prevention panel



Draft Prevention Panel Wing



Motion sensor control

Wired remote control (option)

Wireless remote control (option)

NEW



RC-EX3



RC-E5



RCH-E3

NEW



RCN-TC-24W-E2



FDC100VNP (4.0HP)

FUNCTIONS

Energy saving

Air flow

Comfort & Convenience

Others



SPECIFICATIONS

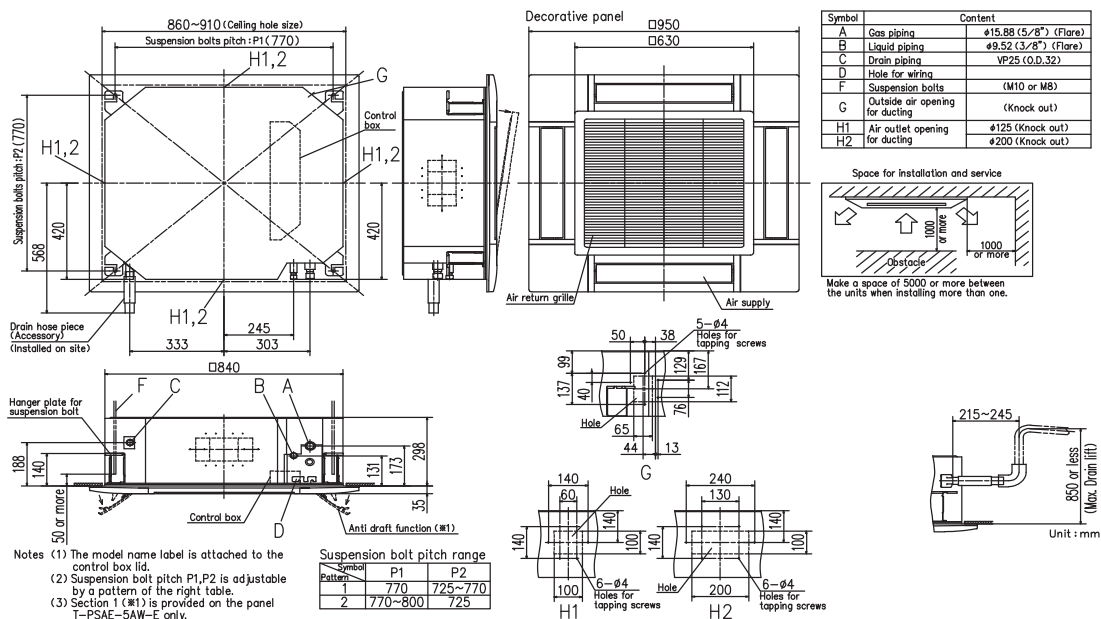
		Micro Inverter					
Set model name		FDT100VNAV	FDT125VNAV	FDT140VNAV	FDT100VSAV	FDT125VSAV	FDT140VSAV
Indoor unit		FDT100VG	FDT125VG	FDT140VG	FDT100VG	FDT125VG	FDT140VG
Outdoor unit		FDC100VNA	FDC125VNA	FDC140VNA	FDC100VSA	FDC125VSA	FDC140VSA
Power source		1 Phase 220-240V, 50Hz / 220V, 60Hz			3 Phase 380-415V, 50Hz / 380V, 60Hz		
Nominal cooling capacity (Min-Max)		kW 10.0 (4.0 ~ 11.2)	12.5 (5.0 ~ 14.0)	13.6 (5.0 ~ 14.5)	10.0 (4.0 ~ 11.2)	12.5 (5.0 ~ 14.0)	13.6 (5.0 ~ 14.5)
Nominal heating capacity (Min-Max)		kW 11.2 (4.0 ~ 12.5)	14.0 (4.0 ~ 16.0)	15.5 (4.0 ~ 16.5)	11.2 (4.0 ~ 12.5)	14.0 (4.0 ~ 16.0)	15.5 (4.0 ~ 16.5)
Power consumption		Cooling/Heating kW 2.73 / 2.64	4.05 / 3.74	4.84 / 4.43	2.73 / 2.63	4.05 / 3.74	4.84 / 4.43
EER/COP		Cooling/Heating 3.66 / 4.26	3.09 / 3.74	2.81 / 3.50	3.66 / 4.26	3.09 / 3.74	2.81 / 3.50
Inrush current		A 5					
Max. current		A 24					
Sound power level*1	Indoor	Cooling/Heating 63 / 63	64 / 64	64 / 64	63 / 63	64 / 64	64 / 64
	Outdoor	Cooling/Heating 70 / 70	71 / 71	73 / 73	70 / 70	71 / 71	73 / 73
Sound pressure level*1 *2	Indoor	Cooling (Hi/Me/Lo) dB(A) 39 / 37 / 31	41 / 39 / 32	42 / 39 / 33	39 / 37 / 31	41 / 39 / 32	42 / 39 / 33
		Heating (Hi/Me/Lo) 39 / 37 / 31	41 / 39 / 32	42 / 39 / 33	39 / 37 / 31	41 / 39 / 32	42 / 39 / 33
	Outdoor	Cooling/Heating 54 / 56	55 / 57	57 / 59	54 / 56	55 / 57	57 / 59
		Cooling (Hi/Me/Lo) 26 / 23 / 17	28 / 25 / 18	29 / 26 / 19	26 / 23 / 17	28 / 25 / 18	29 / 26 / 19
Air flow *2	Indoor	Heating (Hi/Me/Lo) m ³ /min 26 / 23 / 17	28 / 25 / 18	29 / 26 / 19	26 / 23 / 17	28 / 25 / 18	29 / 26 / 19
		Cooling/Heating 75 / 73	75 / 73	75 / 73	75 / 73	75 / 73	75 / 73
Exterior dimensions	Indoor	Unit: 298 x 840 x 840 Panel: 35 x 950 x 950					
	Outdoor	HeightxWidthxDepth mm 845 x 970 x 370					
Net weight	Indoor	kg 30(Unit:25 Standard Panel:5)					
	Outdoor	kg 80				kg 82	
Ref.piping size	Liquid/Gas	ømm 9.52(3/8") / 15.88(5/8")					
Refrigerant line (one way) length		m Max.50					
Vertical height differences	Outdoor is higher/lower	m Max.50 / Max.15					
Outdoor operating temperature range	Cooling	°C -15~50*3					
	Heating	°C -20~20					
Panel		T-PSA-5AW-E, T-PSAE-5AW-E					
Air filter, Q'ty		Pocket plastic net x 1(Washable)					
Remote control (option)		wired:RC-EX3, RC-E5, RCH-E3 wireless:RCN-T-5AW-E2					



FDT100VG

Micro Inverter Cassette

FDT100VG Indoor Unit



FDC100VNA Outdoor Unit

