

SCM50ZS-S

Multi outdoor units - RAC - Outdoor Unit

RAC outdoor unit with a nominal cooling capacity of 5.0 kW.



Technical Specifications

General Data

Nominal cooling capacity (min-max)	kW	5.0 (1.8 - 7.1)
Nominal heating capacity (min-max)	kW	6.0 (1.4 - 7.5)
EER (Energy Label)		4.76
COP (Energy Label)		4.84
Exterior Dimensions (H x W x D)	mm	640 x 850 (+65) x 290
Net Weight	kg	48.5
Sound Pressure Level (Cooling/Heating)	dB(A)	49 / 51

Electrical Data

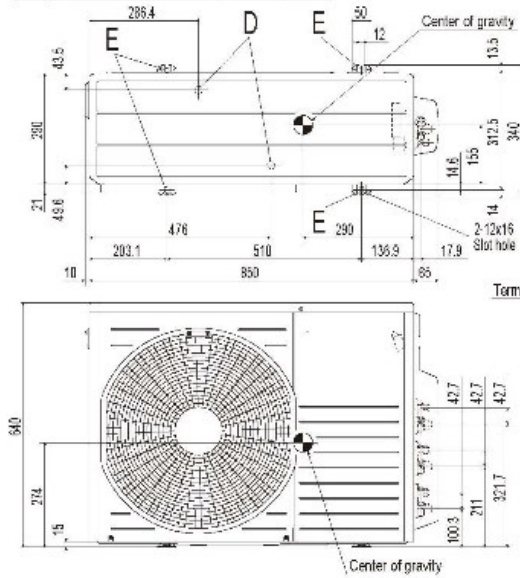
Power Source		1Phase, 220 - 240V, 50Hz
Inrush current (220/230/240v)	A	6.2 / 5.9 / 5.7
Max. running current	A	15
Power consumption (cooling)	kW	1.05 (0.60-2.15)
Power consumption (heating)	kW	1.24 (0.55-2.58)

Installation

Ref. Max Piping Length	m	Max. 40
Vertical Height differences / Outdoor is higher/lower	m	Max. 15 / Max. 15

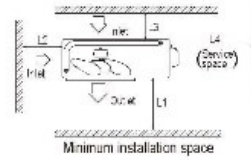
Schematics

Symbol	Content
A	Service valve connection (gas side) φ9.82(3/8") (Flare)
B	Service valve connection (liquid side) φ6.35(1/4") (Flare)
C	Flue / cable draw-out hole
D	Drain discharge hole 3/12-2 places
E	Anchor bolt hole M10-12/4 places

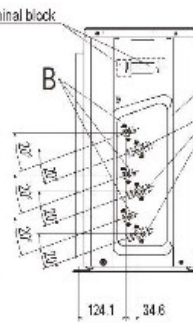


Notes

- The unit must not be surrounded by walls on the four sides.
- The unit must be fixed with anchor bolts. An anchor bolt must not protrude more than 15mm.
- If the unit is installed in the location where there is a possibility of strong winds, place the unit such that the direction of air from the outlet gets perpendicular to the wind direction.
- Leave 200mm or more space above the unit.
- The wall height on the outlet side should be 1200mm or less.
- The model name label is attached on the right side of the unit.



Installation space	
L1	600 or more
L2	100 or more
L3	100 or more
L4	No obstacles (Service space or electrical parts)



Unit:mm

Model SCM50ZS-S