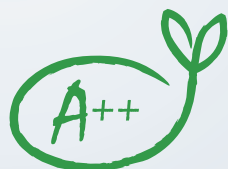


### Split Air Conditioner

Model : ABYG18LVTB / ABYG24LVTA



18 Model



Wireless R.C.



For ABYG18LVTB



For ABYG24LVTA



## Floor / Ceiling Range

### Feature

#### Flexible installation

Example for floor installation  
Floor console



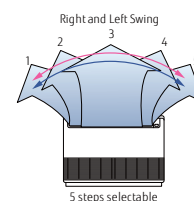
Example for ceiling installation  
Under ceiling



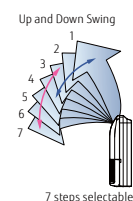
### Feature

#### Double auto swing

A combination of right/left and up/down directional swing allows 3-dimensional air direction control



⇒ Steps  
→ Swing: Cooling, Dry and Fan mode  
→ Swing: Heating and Fan mode

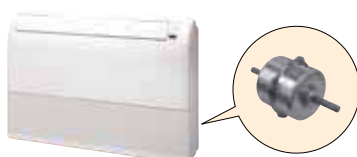


7 steps selectable

### Feature

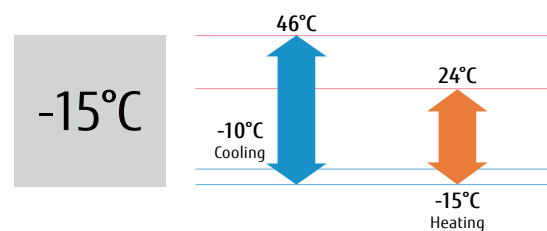
#### High power DC fan motor

- High power
- Wide rotation range
- High efficiency



### Feature

#### Low ambient operation



## Optional parts

Wired Remote Controller:	UTYRVNYM
Simple Remote Controller:	UTYRSNYM
External Connect Kit	UTYXWZX
Modbus Interface	FJRCMBS1
KNX Interface	FJRCKNX1i
WiFi Interface	FJRCWIF1

## Feature explanation



### Economy mode

Thermostat setting automatically changes according to the temperature to avoid unnecessary cooling and heating.



### 10°C HEAT operation

The room temperature can be set to go no lower than 10°C, thus ensuring that the room does not get too cold when not occupied.



### Auto-changeover

The unit automatically switches between heating and cooling modes based on your temperature setting and the room temperature.



### Double swing automatic

Complex swing action of flaps enables automatically to swing both horizontal and vertical directions.



### Automatic fan speed

The micro-computer automatically adjusts the airflow effectively to follow the changes of room temperature.



### Auto restart

In the event of a temporary power failure, the air conditioner will automatically restart in the same operating mode as before, once power supply is restored.



### Sleep timer

The micro-computer gradually changes the room temperature automatically to afford a comfortable night's sleep.



### Program timer

This digital timer allows selection of one of four options: ON, OFF, ON + OFF or OFF + ON.

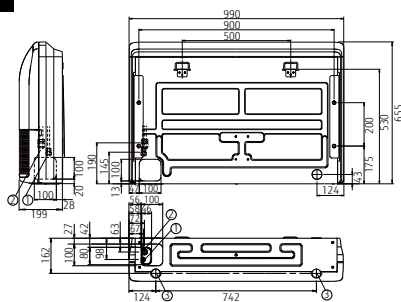


### Filter sign

Indicates the filter cleaning period by lamp.

## Dimensions

(Unit : mm)



- ① Refrigerant piping flare connection (Liquid)
- ② Refrigerant piping flare connection (Gas)
- ③ Drain piping connection

## Specifications

(TENTATIVE)

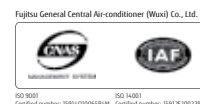
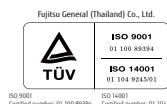
	Indoor	ABYG18LVTB	ABYG24LVTA
	Outdoor	AOYG18LALL	AOYG24LALA
Nominal Capacity (kW)	Cooling	5.20 (0.90-5.90)	6.80 (0.90-8.00)
	Heating	6.00 (0.90-7.50)	8.00 (0.90-9.10)
UK Total / Sensible Cooling *		4.79 / 3.33	6.05 / 4.51
Power Consumption (kW)	Cooling	1.62	2.21
	Heating	1.66	2.26
EER / COP (Nominal Conditions)		3.21 / 3.61	3.08 / 3.54
Pdesign (kW) @ -10°C	Cooling	5.20	6.80
	Heating	5.20	6.00
SEER	Cooling	6.10	5.60
SCOP	Heating (Average)	4.00	3.90
Energy Efficiency Class	Cooling	A++	A+
	Heating (Average)	A+	A
Annual Energy Consumption (kWh/a)	Cooling	298	425
	Heating	1819	2150
Moisture Removal	l/h	2.00	2.70
Dimensions (HxWxD) mm	Inner	199x990x655	199x990x655
	Outer	578x790x300	578x790x315
Net Weight (kg)	Inner	27	27
	Outer	40	44
Room Air Circulation (high) m3/h	Inner	780	980
	Outer	2000	2470
Power Supply	V-PH-Hz	230 / 1 / 50	230 / 1 / 50
Power Supply To	Outdoor	Outdoor	Outdoor
Running Current (A)	Cooling	7.20	9.70
	Heating	7.40	9.90
Starting Current	A	7.40	9.90
Suggested MCB/Fuse	A	16	16
Interconnecting Cable		3 + E	3 + E
Remote Control Type		Wireless	Wireless
Sound Pressure (dB(A) Cooling)	Indoor Q/L/M/H	31 / 34 / 40 / 43	35 / 40 / 44 / 48
	Outdoor H	50	52
Sound Power (dB(A) Cooling)	Indoor H	57	61
	Outdoor H	62	67
Max Pipe Length	m	25	30
Max Height Difference	m	15	20
Refrigerant Charge	m	15	15
Additional Refrigerant Charge	g/m	20	20
Pipe Size (inches)	Gas	1/2	5/8
	Liquid	1/4	1/4
Operating Range (OC)	Cooling	-10 ~ 46	-10 ~ 46
	Heating	-15 ~ 24	-15 ~ 24
Refrigerant		R410A	R410A

### Note

•Cooling/heating capacities are based on the following conditions.

Cooling	Indoor temperature 23°CDB / 16°CWB Outdoor temperature 30°C
---------	--

- Performance test is in accordance with EN14511
- Seasonal efficiency test is on accordance with EN14825
- Sound power test is in accordance with EN12102



- Specifications and design are subject to change without notice for further improvement.
- Actual products' colours may be different from the colours shown in this printed material.

Distributed by:

**FUJITSU GENERAL AIR CONDITIONING (UK) LTD**  
Unit 150 Centennial Park, Centennial Avenue, Elstree, Herts. WD6 3SG  
www.fujitsu-general.com/uk

Tel: +44 (0)208 731 3450 Fax: +44 (0)208 731 3451

Copyright© 2016 Fujitsu General Limited. All rights reserved. 3EFNP10-1510E