

SRR50ZM-S

5.0kW

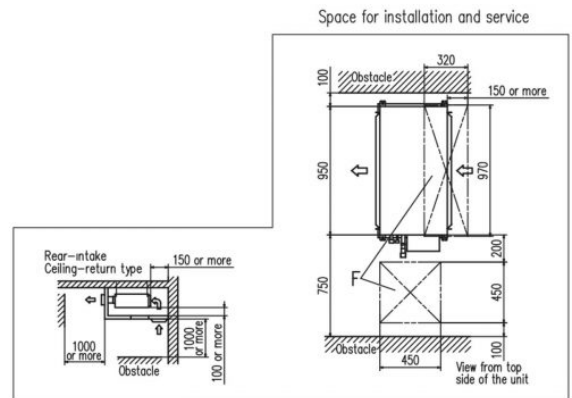
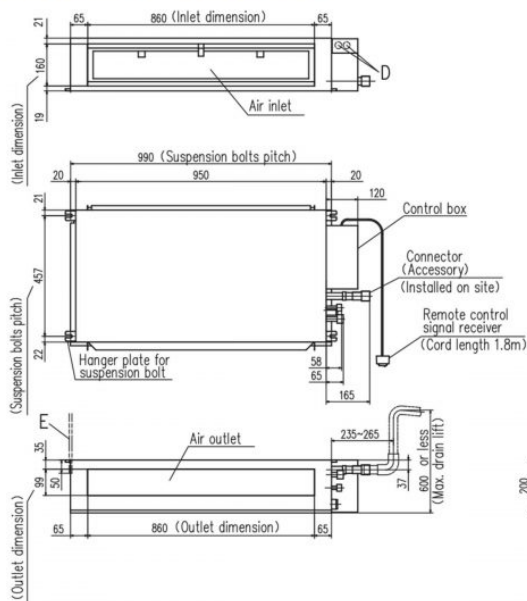
Specifications

Nominal cooling capacity		kW	5.0
Nominal heating capacity		kW	5.8
Sound power level	Cooling	dB(A)	59
	Heating	dB(A)	61
Sound pressure level	Cooling(Hi/Me/Lo/Ulo)	dB(A)	41 / 37 / 34 / 29
	Heating(Hi/Me/Lo/Ulo)	dB(A)	43 / 39 / 37 / 32
Air flow	Cooling(Hi/Me/Lo/Ulo)	m ³ /min	13.5 / 11.0 / 10.0 / 7.5
	Heating(Hi/Me/Lo/Ulo)	m ³ /min	14.5 / 12.5 / 11.0 / 8.5
Available external static pressure		Pa	50(Initial static pressure with air filter : 5Pa)
Exterior dimensions (H×W×D)		mm	200×950×500
Net weight		kg	24.0
Refrigerant piping size	Liquid / Gas	mm ø	6.35(1/4") / 12.7(1/2")
Bottom air inlet kit (option)			UT-BAT2EF

- The data is measured under the following conditions(ISO-T1, H1). Cooling: Indoor temp. of 27°CDB, 19°CWB, and outdoor temp. of 35°CDB. Heating: Indoor temp. of 20°CDB, and outdoor temp. of 7°CDB, 6°CWB.
- Sound level the value in an anechoic chamber. During operation these values are somewhat higher due to ambient conditions.

Schematics

SRR50ZM-S SRR60ZM-S



Symbol	Model	Content
A	Gas piping	419.7 (1.2") (1/2")
B	Liquid piping	46.35 (1.4") (1/2")
C ₁	Drain piping	VP25 (I.D. 25, O.D. 32)
C ₂	Drain piping (Gravity drainage)	VP25 (I.D. 25, O.D. 32)
D	Hole for wiring	φ25 x 2
E	Suspension bolts	(M10)
F	Inspection hole	(450x450), (320x370)